

# Window cleaning Robot

---

## User Manual



Thank you for purchasing this product, please read the manual carefully before using it.



# Content

Content .....	1
1. Important safety instructions and warning .....	2-3
2. Product Description & Parameters .....	4-5
3. Use Steps .....	6-7
4. How to clean glass .....	7-9
5. Power-off protection (USB) system .....	9
6. Troubleshooting .....	10-11
7. Warranty Card .....	12

# 1. Important safety matters and warnings

## 1. Attention! Must read before use

1. Do not allow children to operate this product. Users with physical, sensory or psychological disorders, or those who lack knowledge of the functions and operation of this product must be supervised by a fully competent user after being familiar with the use procedures and safety risks. Users must use the product under the supervision of a fully capable user after familiarizing themselves with the use process and safety risks. Children should not use. This product should not be used by children as a toy.
2. This product can only be used to clean framed windows and glass (this product is not suitable for cleaning windows and glass without frames). If the window or glass frame has a damaged silicone rubber edge, please be sure to pay special attention to prevent the machine will leak and fall off during the cleaning process. User must observe the use scenario to ensure that the product is used safely and securely.

## 2. Safety matters

- Please use the original adapter! (Using a non-original adapter may cause product failure or damage the product.)
- Make sure the adapter has enough space for ventilation and heat dissipation during use. Do not wrap the power adapter with other objects.
- Do not use the adapter in a humid environment. Please do not touch the power adapter with wet hands during use.
- Please charge the window cleaner at the voltage that the power adapter can withstand.
- Do not use a damaged power adapter, charging cable or power plug. Before cleaning and maintaining the machine, the power plug must be unplugged and do not disconnect the power by unscrewing the extension cord to prevent electric shock.
- Do not disassemble the power adapter; if the power adapter is faulty, replace the entire power adapter. For assistance and repair, contact your local customer service or distributor.
- This product battery if not handled properly, there is a risk of combustion or chemical dissection injury to the body. Please do not disassemble the battery, so as not to cause a short circuit. Please do not use in fire and high temperature environment above 60°C.
- Please hand over the used battery to the local professional waste battery product recycling center for recycling, the disposal and recycling of used batteries must comply with national laws and regulations.
- Please strictly follow this manual to use this product.
- Please keep this manual for future use.
- Do not immerse this product in liquids (such as beer, water, drinks, etc.) or leave it in a humid environment for a long time.
- Do not expose this product to sunlight and keep this product away from heat sources (such as radiators, heaters, microwave ovens, gas stoves, etc.).
- Do not place this product in a strong magnetic scene.
- Please store this product out of reach of children.
- Please use this product in 0°C-40°C (32°F-104°F) ambient temperature.
- Do not clean damaged glass and objects with uneven surface, this product will not produce enough vacuum suction adsorption on uneven surface or damaged glass machine.
- The built-in battery of this product can only be replaced by the manufacturer or designated dealer / after-sales center to avoid danger.
- Before removing the battery or handling the battery, the power must be disconnected.
- Please operate this product in strict accordance with the instructions, if any property damage and personal injury caused by improper use, the manufacturer is not responsible for any.

### Attention

1. Before use, please make sure that the safety rope is not broken and one end is firmly connected to the machine and the other end is firmly connected to other. The other end should be securely attached to other objects in the room to prevent the window cleaner from falling and injuring people or objects.
2. If the window glass glue is falling off in the middle section or chipped at the corners due to aging, please be careful to use the machine and make sure it is working during the working period. Please use caution and make sure that there is a user supervising the machine during the working period to prevent the machine from falling down and hurting people or objects.



## 3. Risk of electric shock

- Make sure the power is completely disconnected and the machine is off before cleaning the body or maintaining the body.
- Do not drag the power plug through the extension cord, power off should be properly unplugged.
- Do not continue to use the product if the machine is damaged/the power supply is damaged.
- Machine is damaged, please contact your local after-sales center or dealer for repair.
- Do not use water to clean the machine body and power adapter.
- Do not use this product in dangerous areas such as open fire, bathroom with water flowing from the open nozzle, by the swimming pool, etc.
- Do not damage or twist the power cord. Do not put heavy objects on the power cord or adapter to avoid damage.

## 4. Warnings


1. Before operation, make sure to attach the safety rope and tie it securely to a stable indoor unit.
2. Before turning on the machine, check the safety rope for damage and secure knotting. Make sure there is no damage and that the knot is secure before using the product.
3. When cleaning the glass of a window or door without a blocking table, please set up a safety warning area downstairs.
4. Fully charge the built-in backup battery before use (green light on).
5. Do not use in rainy or wet weather.
6. Turn on the machine first and then place it on the window glass.
7. Make sure the machine is safely attached to the window surface before releasing your hands.
8. Before turning off the machine, please hold the machine to avoid dropping it.
9. Do not use this product to clean frameless windows or glass.
10. Do not use the product to clean frameless windows or glass. Make sure the cleaning cloth is properly attached to the bottom of the machine to prevent air leakage when the window cleaner is adsorbed.
11. Do not spray the machine or the bottom of the machine. Do not spray water on the body or the bottom of the machine, spray water only on the cleaning cloth.
12. Do not allow children to use the machine.
13. Do not use the machine to clean broken glass, some frosted glass may be scratched during cleaning, please use with caution!

## 2. Product Description & Parameters

### 1. Product Description

1. Window cleaning Robot is a new generation of single-sided glass wiping robot. It has a vacuum motor, which can make the machine adsorb on the glass surface and walk freely on the vertical glass surface. The built-in uninterruptible power system UPS (uninterruptible power system) can supply power to the equipment to prevent the equipment from falling due to power failure.
2. Window cleaning Robot has two well-designed cleaning wheels with suction cup, walking and cleaning functions. The cleaning wheel can absorb and walk on the vertical glass surface. The cleaning cloth on the cleaning wheel can be easily removed and replaced. The cleaning cloth is made of microfiber cloth. The cleaning effect is very good.
3. The robot has artificial intelligence, can plan the path, detect the frame, and automatically clean the entire window. Manual remote control mode, you can freely control the robot.
4. The new generation window cleaning robot is upgraded with more advanced artificial intelligence technology, with a more fashionable appearance and a lighter and thinner body. The body thickness is only 85mm, which is 1/3 lower than the previous generation. It has better cleaning performance in more different home environments.

### 2. Specifications

Model number	Product parameter	
	Input voltage	AC100 ~ 240V 50Hz ~ 60Hz
	Rated power	80W
	Battery capacity	500mAh
	Bimension	295*145*85mm
	Suction force	2800Pa
	Net weight	1.05KG
	Anti-fall control	Ups uninterruptible power supply system / safety rope
	Noise	65dB
	Border detection	Automatic
	Control mode	Nfrared remote control
	Cleaning mode	3 kinds
	Water tank capacity	30mL
	Water spray method	Manual / Auto

### 3. Product component name



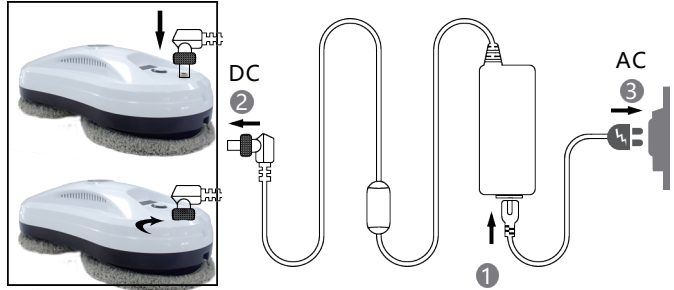
### 4. Product accessories



### 3. Use Steps

#### 1. Power connect

- A. Connect the AC power cord to the adapter,
- B. Insert the L-type threaded connector into the power connector of the fuselage and tighten it,
- C. Plug the power cord into the socket



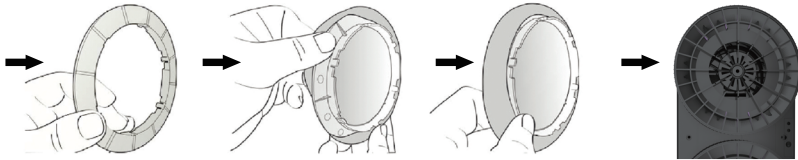
#### 2. Charging

Our device has built-in battery for standby power supply in case of power failure. Please make sure the battery is fully charged before use (green light is on)

- A. First turn off the power switch on the device, connect the power cord, and the orange light is on, indicating that it is in the charging state.
- B. When the green light is on, means the battery is fully charged

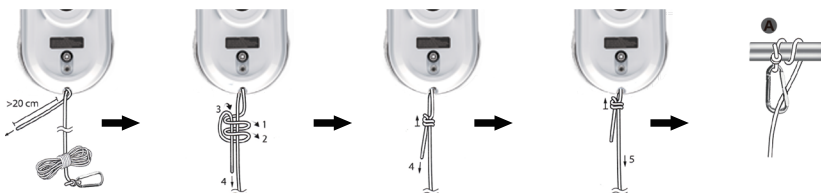
#### 3. Install the cleaning cloth and clean ring

According to the diagram, Pls make sure the cleaning cloth is put on the cleaning ring, and the cleaning ring is correctly put on the cleaning wheel to prevent air leakage.



#### 4. Attach a safety rope

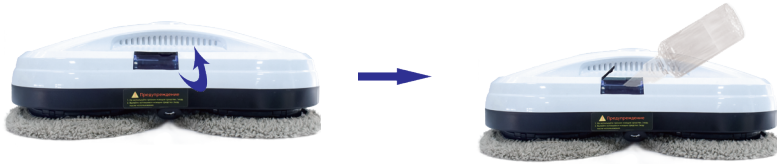
- A. For the glass doors and windows without balcony, a danger warning must be put on the ground downstairs, to make sure people do not approach
- B. Please check whether the safety rope is damaged and whether the knot is loose before using.
- C. Be sure to fasten the safety rope before using, and tie the safety rope to the fixed objects in the house to avoid danger.






## 5. 加入清潔液或水

- A. Only use water or special detergent diluted with water.
- B. Please do not add any other detergent to the water tank.
- C. Open the silicone cover and fill in the cleaning solution.




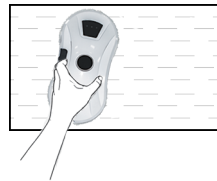
## 6. Attach the machine to the glass

- A. Press and hold the  key for 2 seconds to turn on, and confirm that the fan rotates.
- B. Put the machine on the glass and keep a certain distance from the window frame.
- C. Make sure that the machine can be attached to the glass, and then let go



## 7. Cleaning completed

- A. Hold the window cleaner with one hand and press the  for 2 seconds with the other hand to turn off the power.
- B. Remove the window cleaning robot from the window.
- C. Untie the safety rope and place the machine and its related accessories in a dry and ventilated environment for next use.



## 4. Cleaning function

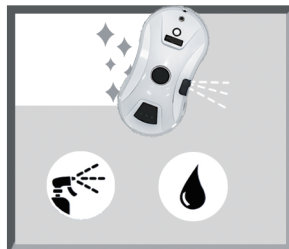
### 1. Dry wipe

- A. The first time you wipe, be sure to "dry wipe" without spraying water, first remove the sand on the surface of the glass.
- B. If you spray some water (detergent) on the cleaning cloth or glass first, the water (detergent) will mix with the sand and turn into yellow mud, and the wiping effect will be poor.
- C. When the machine is used in sunny or low-humidity weather, dry wipe is the best





## 2. Wet Wipe

Change the clean cloth, or keep the upper cleaning wheel clean and dry, spray a little detergent or water (1~2 spray) on the lower cleaning cloth. Do not wet the whole cloth, as the whole wet cloth will affect the operation of the machine.



## 3. Automatic mode and manual mode

A. Press **AU**  on the remote control to enter the automatic spray mode.

B. Press the  manual spray button on the remote control to enter the manual spray mode.



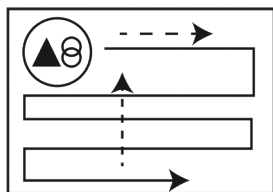
自动喷水键



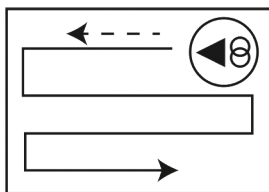
手动喷水键



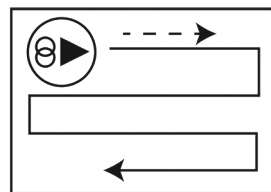
## 4. Three intelligent path planning modes



Auto clean up and then down



Auto clean left and then down



Auto clean right and then down

## 5. The remote control

	Auto clean up and then down		Manual upward movement
	Auto clean left and then down		Manual downward movement
	Auto clean right and then down		Manual move left
	Automatic water spray		Manually move to the right
	Manual water spray		one-button start



## 5. Uninterrupted Power failure(UPS)function

- When the power is off, the device will start the built-in battery power, which can last for 20 minutes.
- In the event of a power failure, the machine will stay in place and will not move forward, and will emit a warning sound. The red/blue lights will flash alternately. Return to the machine as soon as possible to avoid falling from the glass due to the power failure.
- Use the safety rope to gently pull the device back; when pulling the safety rope, keep it as close to the glass as possible to avoid falling.



## 6. Troubleshooting

- 1. When the cleaning cloth is used for the first time (especially in the dirty environment of the outer window glass), the machine may run slowly or even fail.**
  - A. When unpacking the machine, clean and dry the supplied cleaning cloth before use.
  - B. Spray a little water or glass water evenly on the cleaning cloth or the surface of the glass to be wiped.
  - C. After the cleaning cloth is dampened and wrung out, put it into the cleaning ring of the machine for use
- 2. The machine will test itself at the beginning of operation. If it can not run smoothly and there is a warning sound, it means that the friction is too large or too small.**
  - A. Whether the cleaning cloth is too dirty.
  - B. The efficient of friction of glass stickers and fog stickers is relatively low, so they are not suitable for use.
  - C. When the glass is very clean, it will be too slippery.
  - D. When the humidity is too low (air conditioning room), the glass will be too slippery after wiping for many times.



- 3. When pressing the up automatic cleaning button , the machine can't detect the upper edge of the window due to the sliding of the upper edge of the window.**

Please press the  key to switch to  or  auto clean mode.




- 4. The machine cannot wipe the upper left side of the glass.**

You can use the remote control manual window cleaning mode to wipe the part that has not been wiped (sometimes the glass or cleaning cloth is slippery, the width of the wiped glass is larger, and the top line slides a little, resulting in the upper left position can not be wiped).

- 5. The machine can't clean the windows completely, but finish the cleaning work ahead of time .**

You can press  or  auto window mode to continue the unfinished part.

- 6. Possible reasons for slipping and not climbing when climbing**

- A. The friction is too small. The friction coefficient of stickers, thermal insulation stickers or fog stickers is relatively low.
- B. The cleaning cloth is too wetWhen the glass is very clean, it will be too slippery.
- D. When the humidity is too low (air conditioning room), the glass will be too slippery after wiping for many times.
- E. When starting the machine (press  or  or ) , please place the machine at a distance from the window frame to avoid wrong judgment.

- 7. The machine doesn't run smoothly. Possible reasons**

- A. The cleaning cloth is too dirty. Please replace it.
- B. There are different areas on the glass surface (glass area, sticker area, thermal insulation sticker area or fog sticker area). Please use it in a single area.

C. If the screw of the cleaning wheel is loose, please lock it (do not lock it too tightly, otherwise it may affect the glass glue thickness at the bottom of the window frame or the performance of the beveled window frame)

**8. After cleaning, round wheel marks remain on the glass surface**

The cleaning cloth is too dirty. Please replace it with a clean cloth and wipe it again.

**9. How to deal with the warning sound and red light flashing when the machine stops operation due to power failure?**

A. Gently pull the safety rope back to the machine; when pulling the safety rope, it should be close to the parallel glass as far as possible to avoid falling.

B. Turn off the machine power switch.

C. Check the wire for poor contact or broken wire.

**10. The machine stops when encountering unknown obstacles, the red light flashes and there is no warning sound. How to deal with it?**

A. Gently pull the safety rope back to the machine; when pulling the safety rope, it should be close to the parallel glass as far as possible to avoid falling.

B. Turn off the machine power switch.

C. Check the wire for poor contact or broken wire.

**11. There are arc marks on the polished glass when the light is shining at night?**

For the first time, please turn off the water spraying function and use a clean cloth to remove the sand.

For the second wipe, clean and replace the clean cloth, turn on the water spraying function, or keep the upper cleaning wheel clean and dry, and spray a little detergent or alcohol on the lower cleaning wheel (1 or 2 spray), which can not be completely wet, and can eliminate the arc trace. All wet cleaning cloth will affect the operation of the machine

**12. The machine has cleaned all the windows, but it can't stop automatically**

Please press  the key to stop the operation.

**13. The machine will not spray water**

A. Please confirm whether the water spray function switch is on.

B. Clean the ultrasonic nozzle with a clean soft cloth.

C. Please check the water tank whether there is water and whether the added cleaning solution is clean and pure.

## 7. Product Warranty

- If your cleaning robot is defective during the warranty period due to defective materials, defective workmanship or defective function.
- If your glass cleaning robot develops a problem due to a defect in material, workmanship or function within the warranty period from the date of purchase or delivery.
- Please contact your local retailer or local authorized dealer for repair or replacement.

## 8. Prohibitions

- This warranty will automatically expire and will not apply to any product purchased.
- This warranty will automatically void and does not apply to any product purchased if.
- Normal wear and tear (e.g., cleaning cloths, safety harnesses, etc.)
- Reduced battery discharge time due to aging or use of the battery
- Damage due to failure to assemble or install in accordance with the manufacturer's instructions
- Damage caused by not assembling or installing in accordance with the manufacturer's instructions.
- Damage caused by using the glass cleaning robot for any other purpose.
- Damage caused by using the Glass Cleaning Robot for purposes other than normal household use.
- Damage caused by the use of parts and accessories not specified by the manufacturer.
- Damage caused by accident, abuse or misuse.

## 9. Environment



The symbol on this equipment indicates that this equipment is not to be disposed of as household waste. The symbol on this equipment indicates that this equipment is not to be disposed of as household waste. Instead, it must be given to the applicable collection point for recycling of electrical and electronic equipment. Waste must be disposed of in accordance with local environmental regulations.



This appliance complies with the European Directives 2014/ 30 / EU, 2014 / 35 /EU, and 2014/53 /EU  
Subject to change without notice.



