

Smart Window clean Robot

User Manual



◎ Safety instructions

Application: This product is suitable for cleaning all kinds of smooth flat surface, such as glass, floor, tile, marble, etc

★ ***This product is a cleaner for glass, The circumstances and safety of the place where it can be used should be judged by the user.***

◎ Safety precautions before using

Please read the instructions carefully before using this product.

1. Be sure to fasten the safety rope before using, and tie the safety rope to the fixed object inside the house to avoid danger
2. Please check whether the safety rope is damaged and whether the knot is loose before using. .
3. For the glass and windows without balcony, the danger warning must be set on the ground downstairs to forbid people approaching
4. The machine must be connected to the power by adapter to operate normally.
5. Please use it when the built-in battery is fully charged (green light is on).
6. Please turn on the power button before placing the machine on the glass or floor
7. When placing the machine on the glass, please make sure that the machine is adsorbed tightly
8. Please remove the machine before turning off the power.
9. Before using, please make sure that the cleaning ring is installed on the cleaning wheel to avoid air leakage.
10. Do not use it in rainy or humid weather.
11. Do not spray water directly to the machine.
12. Keep the kids out of using the machine.
13. This product is not a toy. Please don't let children use and operate it. Keep vigilant when using the instrument. Please don't let children approach the working area of the machine.
14. Do not use on cracked glass. When using on reflective glass or coated glass, be careful for scratches on the surface of glass due to wind and sand.
15. Do not let the hair, corners of clothes, fingers and any part of the body close to the opening of the product or rotating parts.
16. Do not let the machine inhale to flammable liquid or gas such as gasoline or use it near flammable liquid or gas.

◎ Product features

- It can wipe any thickness of glasses
- Manual and remote control mode
- Artificial intelligence technology
- Ultrasonic automatic water spraying
- Automatic mode in three directions to clean the whole window automatically
- Ultra fine fiber cleaning cloth
- Automatic stop after wiping
- High strength safety rope and safety rope buckle
- Built in power Persistent UPS system can maintain 20 minutes in case of power failure
- Wireless remote control operation
- Anti falling control algorithm
- Automatic detection of window frame
- Power consumption: 90W, 100-240Vac, 50 ~ 60Hz

◎ Product specifications

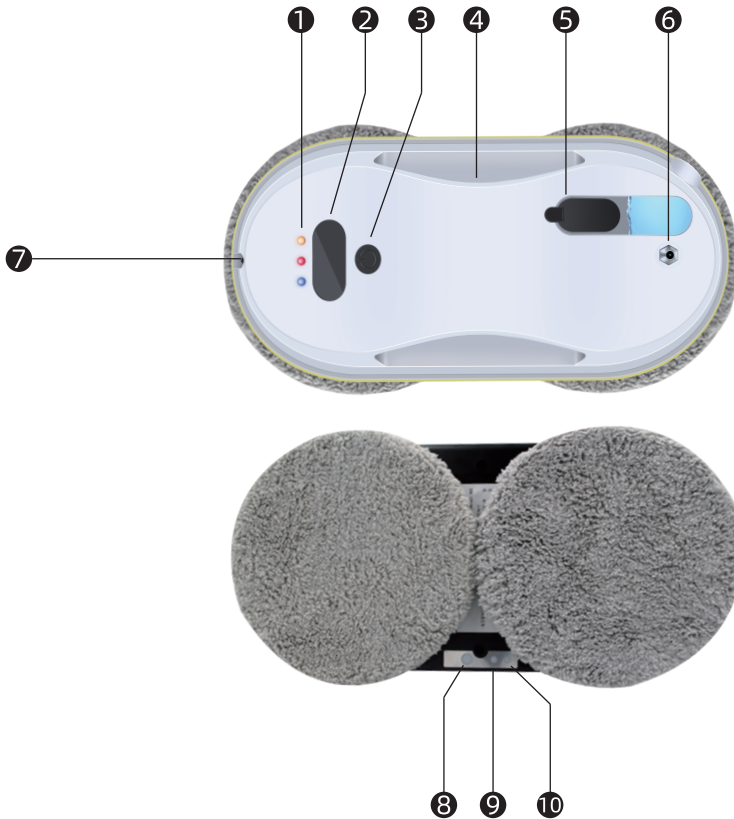
- Main device×1
- Remote control×1
- Power adapter(100-240V,50-60Hz)×1
- Power cable×1
- DC extension cable(4M)×1 (Integrated)
- Clean cloth×10
- Clean ring×4
- Safety rope(4M)×1
- User manual×1

◎ Product introduction

Adsorption mode and shape	Vacuum, double circle
Weight	1050g
Dimension (LMH)	295X148X91mm
Clean mode	Rotary
Software	AI 4.0
Automatic water spraying technology	Ultrasonic water spraying
Glass thickness	Unlimited
Power input	100~240V ,50/60Hz
Capacity	90w
Anti power break [UPS]	20 minutes
Certification	CE FCC RoHS

◎ Product Introduction

- ① Red light: abnormal state,
Blue light: normal operation
Green light: charging completed
Orange light: charging in progress
- ② Remote control receiving window
- ③ Power on/Off
- ④ Exhaust outlet
- ⑤ Water filler hole
- ⑥ Power socket
- ⑦ Safety rope socket
- ⑧ Blue light
- ⑨ Red light
- ⑩ Remote control receiving window



◎ How to clean glass

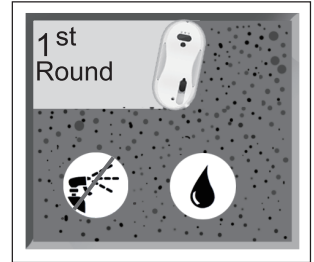
1.First Step: Dry wipe

● For the first time wipe, We must "dry wipe" (turn off the water spray function and do not spray any water), firstly we remove the sand on the glass surface.

● If some water (detergent) is sprayed on the cleaning cloth or glass first, the water (detergent) will be mixed with the sand and turn into yellow mud, and the wiping result will be very poor.

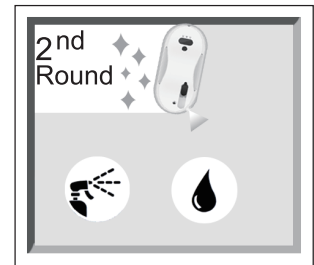
● When the machine is used in sunny or low humidity weather, the dry rubbing effect is the best

In case of slipping, spray water on the cleaning cloth*



2.Second Step:Wet Wipe

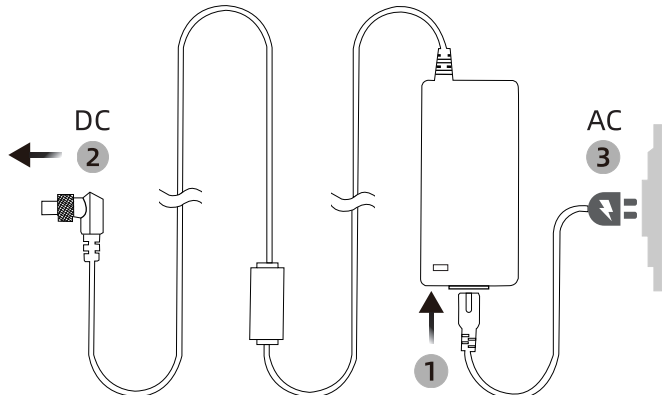
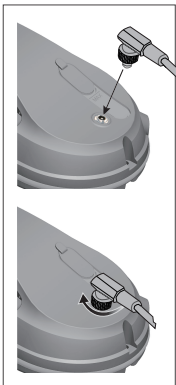
● Change the clean cloth, turn on the automatic water spraying function, or keep the upper cleaning wheel clean and dry. Spray a little detergent (1 ~ 2 spray) on the lower cleaning wheel. Do not wet the whole cloth. The whole wet cloth will affect the operation of the machine.



◎ Use Steps

1.Power connect

- 1) Connect the AC power cord to the adapter,
- 2) Insert the L-type threaded connector into the power connector of the fuselage and tighten it,
- 3) Plug the power cord into the socket



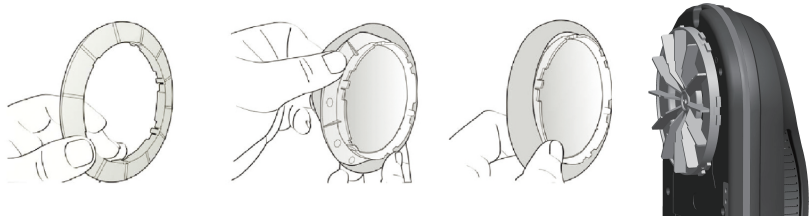
2. Charging

Our device has built-in battery for standby power supply in case of power failure. Please make sure the battery is fully charged before use (green light is on)

- 1) First turn off the power switch on the device, connect the power cord, and the orange light is on, indicating that it is in the charging state.
- 2) When the green light is on, means the battery is fully charged

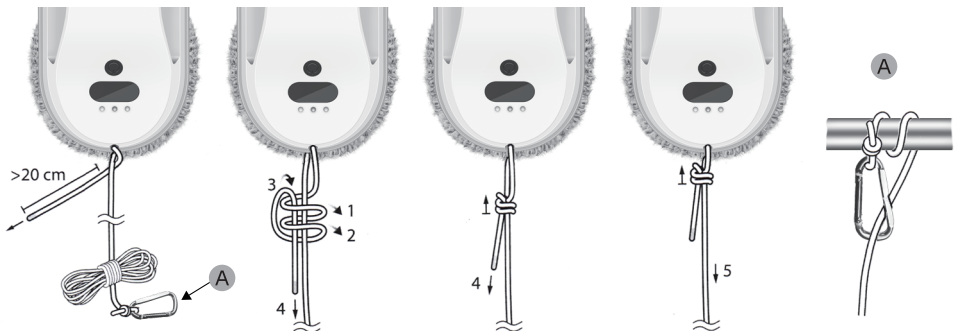
3. Install the cleaning cloth and clean ring

According to the diagram, Pls make sure the cleaning cloth is put on the cleaning ring, and the cleaning ring is correctly put on the cleaning wheel to prevent air leakage.



4. Safety measures

- (1) For the glass doors and windows without balcony, a danger warning must be put on the ground downstairs, to make sure people do not approach
- (2) Please check whether the safety rope is damaged and whether the knot is loose before using.
- (3) Be sure to fasten the safety rope before using _____, and tie the safety rope to the fixed objects in the house to avoid danger.



5.Inject water or detergent

Only use water or special detergent diluted with water. Please do not add any other detergent to the water tank.



6.Attach the Device to the glass


- (1) Long press the power on key for 2 seconds to start the machine and confirm the fan rotation.
- (2) Put the machine on the glass and a distance from the window frame.
- (3) Make sure the machine can be adsorbed on the glass before letting go.

7.Automatic mode and manual mode

- (1) Select the three automatic modes of the remote control

to    automatically clean the window completely. .

- (2) Press the  key to stop the machine.

- (3) Press  to operate the machine manually.

- (4) Press **AU**  for automatic water spraying mode.

- (5) Press  for manual water spraying mode.

8.Remove the machine from the glass

- (1) Hold the window cleaning machine with one hand and turn off the power with the other hand (long press the key for 2 seconds).
- (2) Remove the window cleaner.



⊙ Uninterrupted Power failure(UPS)function

- (1) In case of power failure, the device will start the built-in battery power, which can last for 20 minutes.
- (2) In case of power failure, the trifoliate orange will stay in the same place and will not move forward, and will give a warning sound and the red / blue lights will flash alternately. At this time, the user should withdraw the machine as soon as possible to avoid falling down due to power off.
- (3) The safety rope can be used to gently pull back the device; when pulling the safety rope, it should be close to the glass as far as possible to avoid falling.

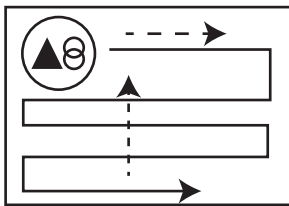
◎ Remote control

From front and back of the product can receive the remote control signal. To replace the remote control battery, please push the battery cover under the back to replace it.

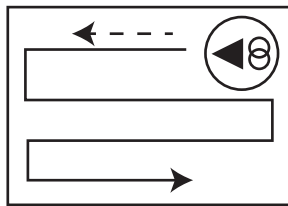


	Up and down automatic cleaning
	Left and down automatic cleaning
	Right and down automatic cleaning
	Pause/Play
	Manually move up, down, right, Left
AU	Automatic water spray
	Manual Water spray

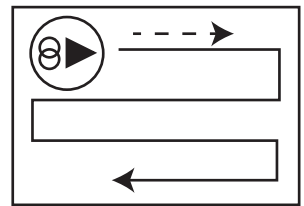
Three intelligent path planning modes



Up to down
clean automatically



Left to down
clean automatically



Right to down
clean automatically

◎ Frequent Ask and Question


1. When the cleaning cloth is used for the first time (especially in the dirty environment of the outer window glass), the machine may run slowly or even fail.

- (1) When the machine is unpacked, clean and dry the cleaning cloth delivered with it before use.
- (2) Spray a little water or glass water on the cleaning cloth or the surface of the inspected glass.
- (3) After the cleaning cloth is wet and twisted dry, then we put into the cleaning ring of the machine for using

2. The machine will test itself at the beginning of operation. If it can not run smoothly and there is a warning sound, it means that the friction is too large or too small.

Please check:

- (1) Whether the cleaning cloth is too dirty.
- (2) The efficient of friction of glass stickers and fog stickers is relatively low, so they are not suitable for use.
- (3) When the glass is very clean, it will be too slippery.
- (4) When the humidity is too low (air conditioning room), the glass will be too slippery after wiping for many times.



3. When pressing the up automatic cleaning button  , the machine can't detect the upper edge of the window due to the sliding of the upper edge of the window.

Please press the  key to switch to  or  auto clean mode.




4. The machine cannot wipe the upper left side of the glass.

You can use the remote control manual window cleaning mode to wipe the part that has not been wiped (sometimes the glass or cleaning cloth is slippery, the width of the wiped glass is larger, and the top line slides a little, resulting in the upper left position can not be wiped).

5. The machine can't clean the windows completely, but finish the cleaning work ahead of time .

You can press  or  auto window mode to continue the unfinished part.

6. Possible reasons for slipping and not climbing when climbing

- (1) The friction is too small. The friction coefficient of stickers, thermal insulation stickers or fog stickers is relatively low.
- (2) The cleaning cloth is too wet
- (3) When the glass is very clean, it will be too slippery.
- (4) When the humidity is too low (air conditioning room), the glass will be too slippery after wiping for many times.
- (5) When starting the machine (press  or  or ), please place the machine at a distance from the window frame to avoid wrong judgment.

7. The machine doesn't run smoothly. Possible reasons

- (1) The cleaning cloth is too dirty. Please replace it.
- (2) There are different areas on the glass surface (glass area, sticker area, thermal insulation sticker area or fog sticker area). Please use it in a single area.
- (3) If the screw of the cleaning wheel is loose, please lock it (do not lock it too tightly, otherwise it may affect the glass glue thickness at the bottom of the window frame or the performance of the beveled window frame).

8. After cleaning, round wheel marks remain on the glass surface

The cleaning cloth is too dirty. Please replace it with a clean cloth and wipe it again.

9. How to deal with the warning sound and red light flashing when the machine stops operation due to power failure?

- (1) Gently pull the safety rope back to the machine; when pulling the safety rope, it should be close to the parallel glass as far as possible to avoid falling.
- (2) Turn off the machine power switch.
- (3) Check the wire for poor contact or broken wire.

10. The machine stops when encountering unknown obstacles, the red light flashes and there is no warning sound. How to deal with it?

- (1) Remote control the machine to a safe location. Or gently pull the safety rope back to the machine; when pulling the safety rope, it should be close to the parallel glass as far as possible to avoid falling
- (2) Remove obstacles on doors and windows.
- (3) Check if there is any cause of air leakage.

11. There are arc marks on the polished glass when the light is shining at night?

For the first time, please turn off the water spraying function and use a clean cloth to remove the sand. For the second wipe, clean and replace the clean cloth, turn on the water spraying function, or keep the upper cleaning wheel clean and dry, and spray a little detergent or alcohol on the lower cleaning wheel (1 or 2 spray), which can not be completely wet, and can eliminate the arc trace. All wet cleaning cloth will affect the operation of the machine.

12. The machine has cleaned all the windows, but it can't stop automatically

Please press the key  to stop the operation.

13. The machine will not spray water

- (1) Please confirm whether the water spray function switch is on.
- (2) Clean the ultrasonic nozzle with a clean soft cloth.
- (3) Please check the water tank whether there is water and whether the added cleaning solution is clean and pure.

⊙ **Safety instructions for power supply / battery**

- Please use the standard power adapter. Using other types of power cord or adapter will lead to failure or danger
- Please use a suitable power socket, and do not place heavy objects on the power cord and adapter. When maintaining the machine, please turn off the power first and pull the plug of the power adapter out of the socket
- When you use the power adapter, you should keep good ventilation around the power supply. Do not cover the power adapter with other objects
- Affect the normal heat dissipation of power adaptation
Do not use the power adapter in a highly humid environment. Do not touch the power adapter with wet hands or feet
- Please use the power cord and adapter according to the label on the adapter
- Do not use damaged power cord and adapter
- The power adapter is a high voltage component. Do not attempt to repair it. If the adapter or power cord is damaged or exposed to excessive humidity, replace the power adapter
- If the battery of this product is not used properly, it may cause fire or chemical burns. Do not break or short circuit this product, or put it in the temperature above 60 ° C, or burn this product. Do not treat this product as household waste, but hand it over to the local electrical and electronic equipment return station
- To maintain the life-span of the built-in battery, please charge it every 4-6 months, to ensure the normal use of the battery

⊙ **Safety warning**

- Please keep this instruction manual properly
- Be sure to comply with the indicative warnings related to the product
- Do not expose the machine to rain or damp place, keep the machine away from liquid
- Do not expose the machine to sunlight or heat
- Please keep the machine and accessories out of the reach of children.
- Operating temperature: 00 C ~ + 400 C
- Storage temperature: - 100 C ~ 500 C

